

Calbrite™

Stainless Steel Conduit Systems

Stainless Steel Explosion Proof GUAT Conduit Outlet Box with Cover

Features:

- Manufactured in type 316 stainless steel to meet any stringent sanitary condition
- Polished with standard "brite" finish to increase corrosion resistance and aesthetic appearance
- Explosion proof, dust-ignition proof
- Designed for use with stainless steel threaded conduit
- Machined tapered female threads for smooth bore inside diameter
- Tightening "Ears" cast into cover to allow for easy tightening and removal
- Grounding screw provided
- Neoprene O-ring included
- No package qty. required



Certifications and Compliances:

UL 1203 Listed

CSA C22.2 Listed

UL file number – E468171

Suitable for use in Class I Division 1 Groups A, B, C and D; Class II Division 1 Groups E, F and G; and Class III Hazardous Locations

Made in the USA

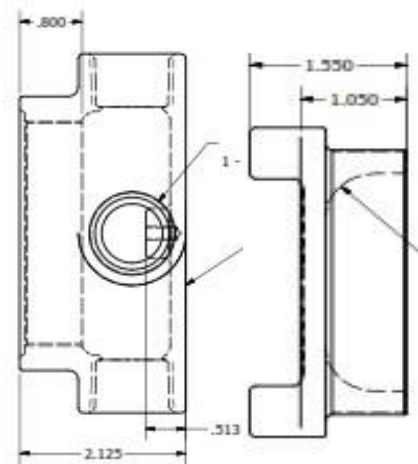


Applications:

Calbrite's stainless steel GUAT conduit outlet boxes are designed for use in hazardous areas and harsh environments to act as pull and splice boxes, to join and connect conduit and/or other conduit fittings, allow for changes in conduit direction and easy access for maintenance and future system changes or upgrades.

Industries Commonly Served:

- Food & Beverage Production & Distribution
- Chemical Plants
- Water & Wastewater Treatment
- Pharmaceuticals & Cosmetics
- Refining & Extraction Sites
- Petrochemical
- Pulp & Paper Mills
- Marine & Coastal Facilities
- Along with other corrosive environments



| Part Number | Trade Size | Overall Length | Overall Width | Overall Height | Weight (ea) per lb. |
|-------------|------------|----------------|---------------|----------------|---------------------|
| S60700GUAT | 3/4" | 4.750" | 4.200" | 3.000" | 3.60 |
| S61000GUAT | 1" | 5.080" | 4.330" | 3.120" | 3.95 |

All dimensions are for informational purposes only *Tolerances +/- 5%