

# Calbrite™

## Stainless Steel Conduit Systems

### Stainless Steel Explosion Proof EYS

#### Conduit Sealing Fitting

#### Features:

- Manufactured in type 316 stainless steel to meet any stringent sanitary condition
- Polished with standard "brite" finish to increase corrosion resistance and aesthetic appearance
- Explosion proof, dust-ignition proof
- Designed for use with stainless steel threaded conduit
- Machined tapered female threads for smooth bore inside diameter
- Designed for use with vertical and horizontal installations
- Large opening for easy packing and setup of sealing compound and fiber dam
- No package qty. required



#### Certifications and Compliances:

UL 1203 Listed  
 CSA C22.2 Listed  
 UL file number – E465422  
 Class I, Div. 1&2, A,B,C,D  
 Class II, Div. 1&2, E,F,G  
 Class III Hazardous Locations  
 Made in the USA

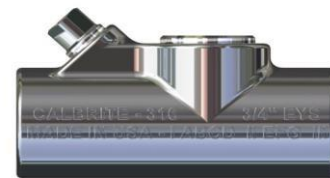
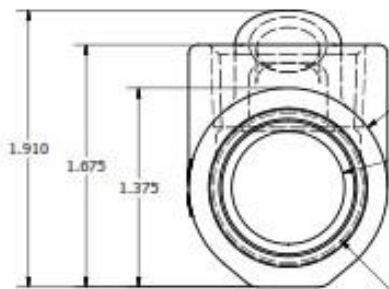
#### Applications:

Calbrite's stainless steel EYS (Seal-Off) fittings are designed for use in hazardous areas and harsh environments for both horizontal and vertical installations. Used to prevent possible explosions from occurring through conduit systems and igniting outside atmospheres. When properly installed and filled with a UL-listed sealing compound, they create a physical barrier that limits the passage of vapors and gases throughout the conduit system.



#### Industries Commonly Served:

- Food & Beverage Production & Distribution
- Chemical Plants
- Water & Wastewater Treatment
- Pharmaceuticals & Cosmetics
- Refining & Extraction Sites
- Petrochemical
- Pulp & Paper Mills
- Marine & Coastal Facilities
- Along with other corrosive environments



Part Number	Trade Size	Overall Length	Overall Width	Overall Height (with plugs)	Sealing Compound Required	Sm. Plug Hole Opening	Lg. Plug Hole Opening	Weight (ea) per lb.
S60700EYS0	3/4"	3.500"	1.380"	2.150"	1-3/4 oz	.470"	.920"	0.88
S61000EYS0	1"	3.760"	1.640"	2.380"	2 oz	.470"	.920"	1.11

All dimensions are for informational purposes only \*Tolerances +/- 5%