

## Stainless Steel Clamp Backs

### Features:

- Manufactured in type 316 stainless steel to meet any stringent sanitary condition
- Polished with standard "brite" finish to increase corrosion resistance and aesthetic appearance
- No package qty. required



### Certifications and Compliances:

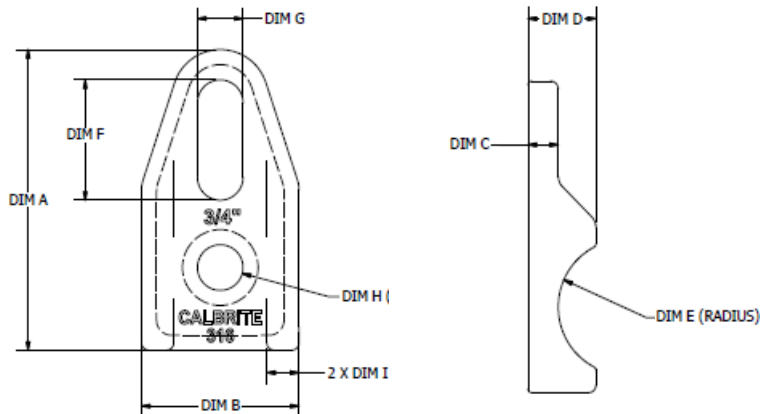
Manufactured to UL specifications  
 Manufactured in the US

### Applications:

The stainless steel one piece clamp back provides spacing from the mounting surface when securing both cable and conduit.

### Industries Commonly Served:

- Food & Beverage Production & Distribution
- Chemical Plants
- Water & Wastewater Treatment
- Pharmaceuticals & Cosmetics
- Refining & Extraction Sites
- Petrochemical
- Pulp & Paper Mills
- Marine & Coastal Facilities
- Along with other corrosive environments



Size	Part Number	A	B	C	D	E	F	G	H (DIA)	I	Weight per ea (lbs)
1/2"	S60500CB00	2.500"	1.310"	0.250"	0.500"	0.310"	1.000"	0.380"	0.380"	0.270"	0.15
3/4"	S60700CB00	2.500"	1.310"	0.250"	0.560"	0.540"	1.000"	0.380"	0.380"	0.270"	0.15
1"	S61000CB00	2.500"	1.310"	0.250"	0.670"	0.670"	1.000"	0.380"	0.380"	0.270"	0.15

All dimensions are for informational purposes only \*Tolerances +/- 5%